



Configure Italax.NET Client (Server installation)

IN THIS DOCUMENT


- 1.1 GENERAL
- 1.2 USAGE
- 1.3 PREREQUISITES
- 1.4 STEPS
- 1.5 FOLLOW-UP ACTIONS


1.1 GENERAL

This document runs through the procedure for configuring Italax.NET Client on a client PC for a multi user server installation of Italax.NET

1.2 USAGE

This document applies only when configuring Italax.NET Client on a client PC for a multi user server installation of Italax.NET. It should only be used where there is a server installation of Italax.NET to hold the data.

 For information on installing Italax.NET in a single user situation, please refer to:
[“Install Italax.NET \(Single user installation\)”](#)

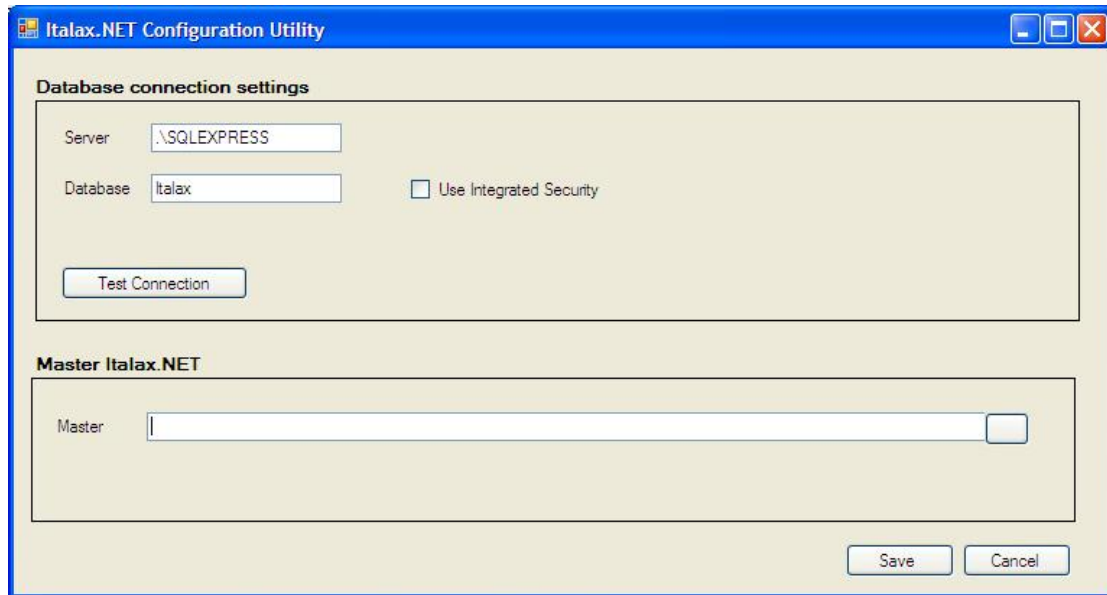
 For information on installing Italax.NET on a server, please refer to:
[“Install Italax.NET \(Server installation\)”](#)

1.3 PREREQUISITES

- The name of the server hosting Italax.NET must be known.
- The client PC must be able to see the server hosting Italax.NET and have read and browse permissions to the Server folder where Italax.NET is installed (Default install location is: c:\Program Files\Italax.Software\Italax.NET)

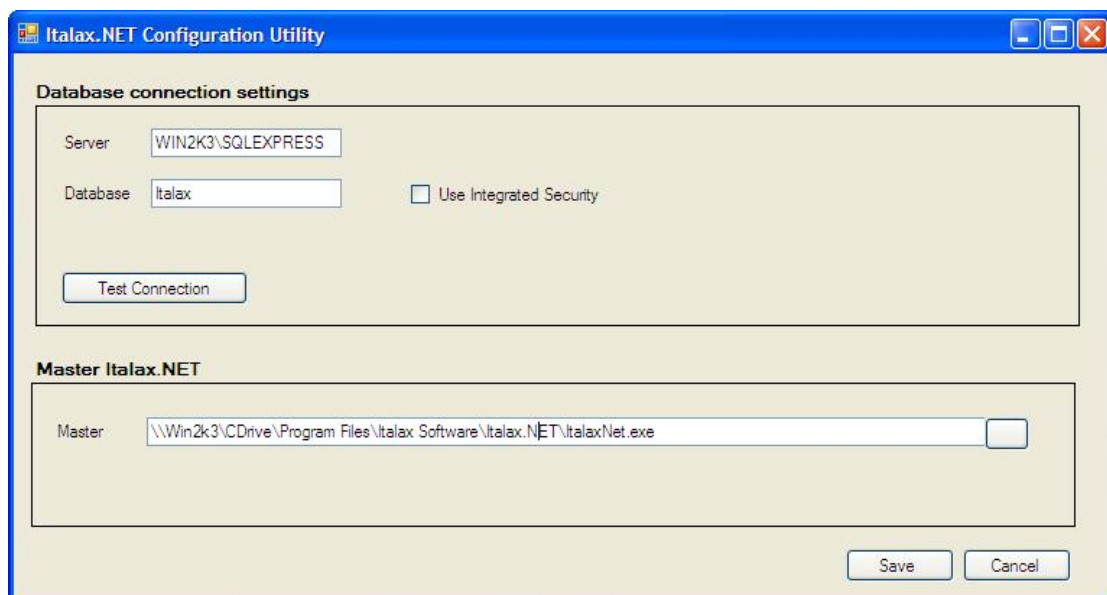
1.4 STEPS

- 1) Open the Italax.NET Configuration utility in the Italax Software program group



- 2) Change the Server field to `<ServerName>\SQLEXPRESS` where `<ServerName>` is the name of the server hosting Italax.NET, Untick "Use Integrated Security", and click to test the database connection.
- 3) Click the browse button on the Master field, and point to the Italax.NET executable (ItalaxNET.exe) on the server installation of Italax.NET.

After configuration, the screen should look like this example:



- 4) Save the configuration and exit.

1.5 FOLLOW-UP ACTIONS

Italax.NET installs with a temporary 30 day licence. After this period you will need to install a licence from Italax.com to continue using Italax.NET



For information on how to register and receive an Italax.NET licence, please refer to:
“Register Italax.NET”