



Install Italex.NET (Single user installation)

IN THIS DOCUMENT

- 1.1 GENERAL
- 1.2 USAGE
- 1.3 PREREQUISITES
- 1.4 STEPS
- 1.5 FOLLOW-UP ACTIONS

1.1 GENERAL

This document runs through the procedure for installing Italex.NET for use on a single PC.

1.2 USAGE

This document applies only when installing Italex.NET for use on a single PC.



For information on installing Italex.NET in a multi-user / server situation, please refer to:

[“Install Italex.NET \(Server installation\)”](#)

1.3 PREREQUISITES

None

1.4 STEPS



IMPORTANT !

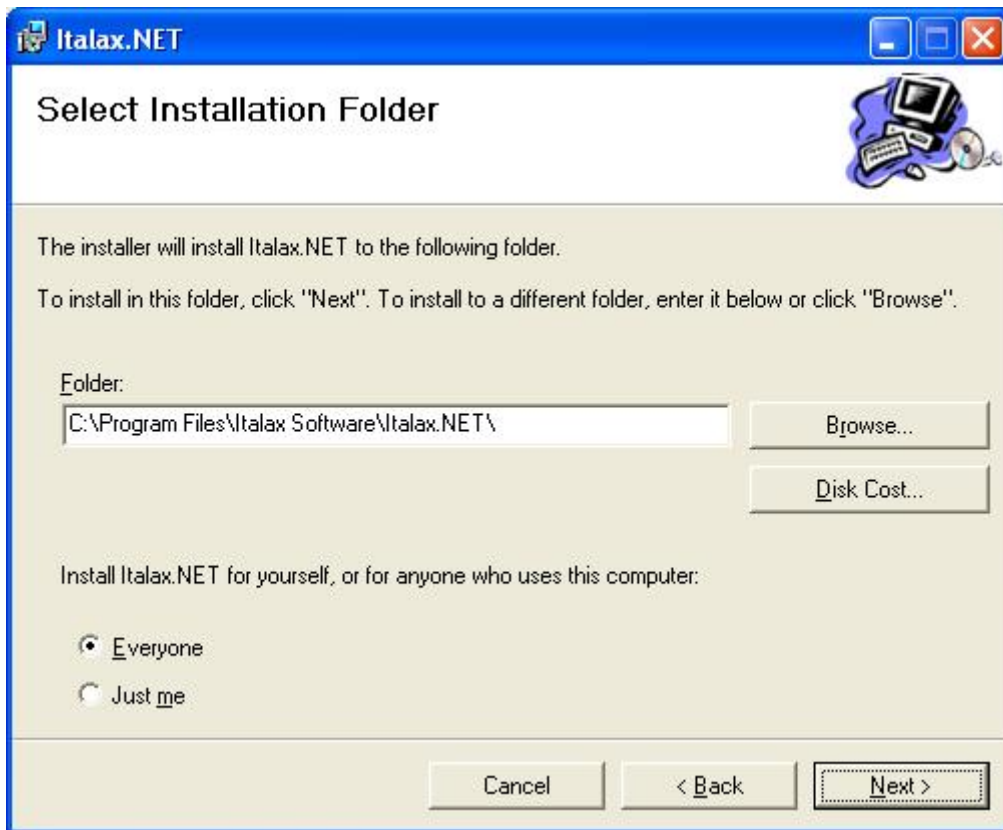
Installing Italex.NET may require one or more restarts. Before running any Italex.NET installer, it is necessary to save information and close any applications that you may have running.

- 1) From the [Italex.NET downloads page](#), download the appropriate install package. If the PC on which Italex.NET is being installed does not have internet access, you will need the Italex.NET install (No internet connection) package instead.
- 2) Unpack the installation package to a fold on your hard drive
- 3) Double click the Setup.exe file to start the installation

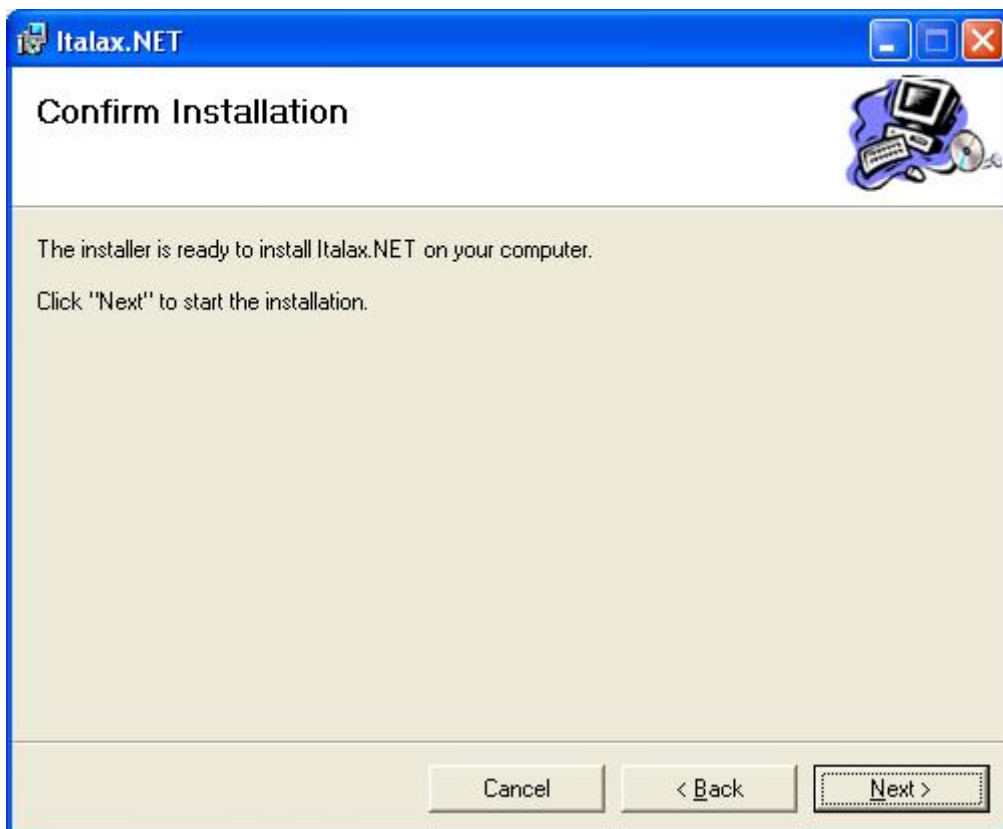
The install package will install necessary prerequisites as required. These prerequisites may take some time to install.



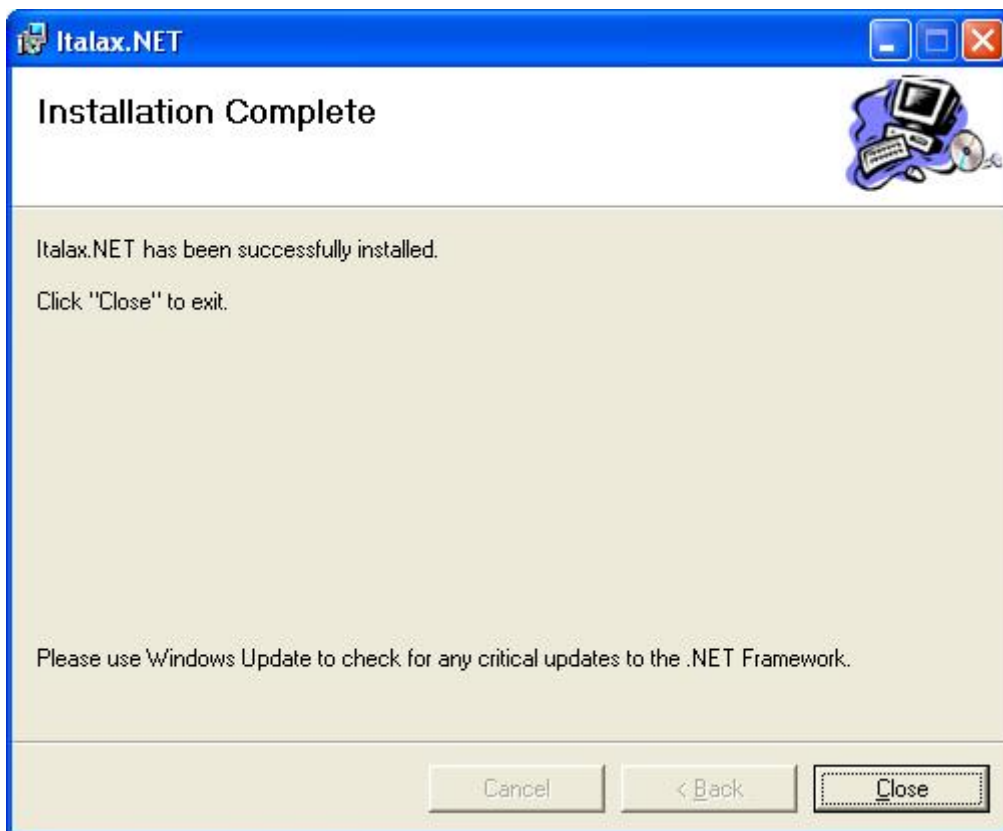
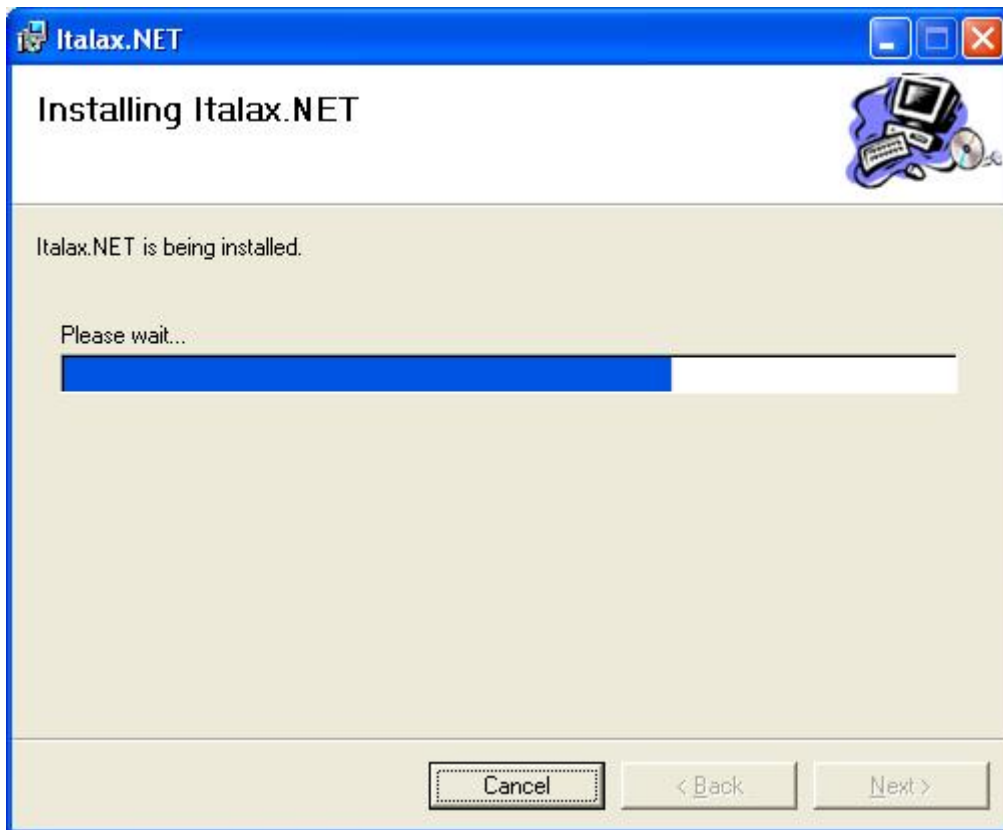
- 4) Click "**Next >>**"



5) If you wish, you can change the default install location for Italax.NET. Click "**Next >>**"



6) Click "**Next >>**"



6) Click **Close**

1.5 FOLLOW-UP ACTIONS

If you are an existing ItalexV6 user, you will likely want to import your existing Italex data into your new Italex.NET installation.

For information on how to converting ItalexV6 data into Italex.NET, please refer to:

[“Convert Italex data to Italex.NET \(Single user Installation\)”](#)

Italex.NET installs with a temporary 30 day licence. After this period you will need to install a licence from Italex.com to continue using Italex.NET

For information on how to register and receive an Italex.NET licence, please refer to:

[“Register Italex.NET”](#)