



IN THIS DOCUMENT


- 1.1 GENERAL
- 1.2 USAGE
- 1.3 PREREQUISITES
- 1.4 STEPS
- 1.5 FOLLOW-UP ACTIONS


1.1 GENERAL

This document runs through the procedure for installing the Italex.NET Client on a client PC for a multi user server installation of Italex.NET

1.2 USAGE

This document applies only when installing Italex.NET on a client PC for a multi user server installation of Italex.NET. It should only be used where there is a server installation of Italex.NET to hold the data.

 For information on installing Italex.NET in a single user situation, please refer to:
[“Install Italex.NET \(Single user installation\)”](#)

 For information on installing Italex.NET on a server, please refer to:
[“Install Italex.NET \(Server installation\)”](#)

1.3 PREREQUISITES

None

1.4 STEPS



IMPORTANT !

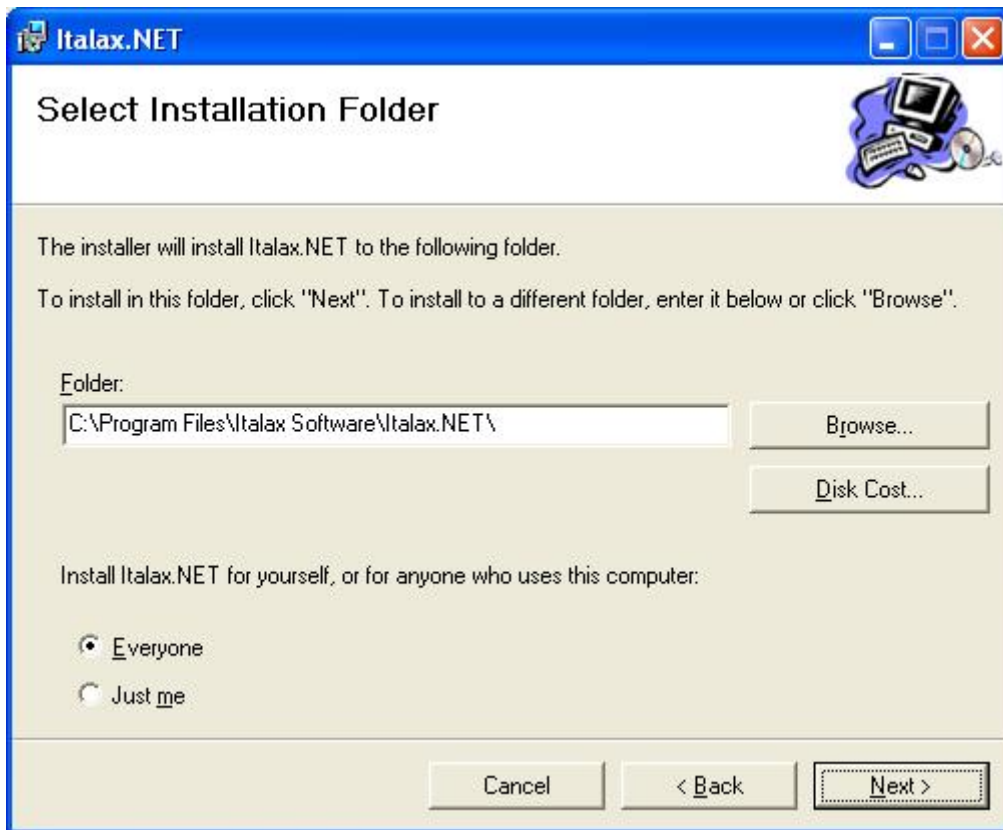
Installing Italex.NET may require one or more restarts. Before running any Italex.NET installer, it is necessary to save information and close any applications that you may have running.

- 1) From the [Italex.NET downloads page](#), download the appropriate install package. If the PC on which Italex.NET is being installed does not have internet access, you will need the Italex.NET install (No internet connection) package instead.
- 2) Unpack the installation package to a fold on your hard drive
- 3) Double click the Setup.exe file to start the installation

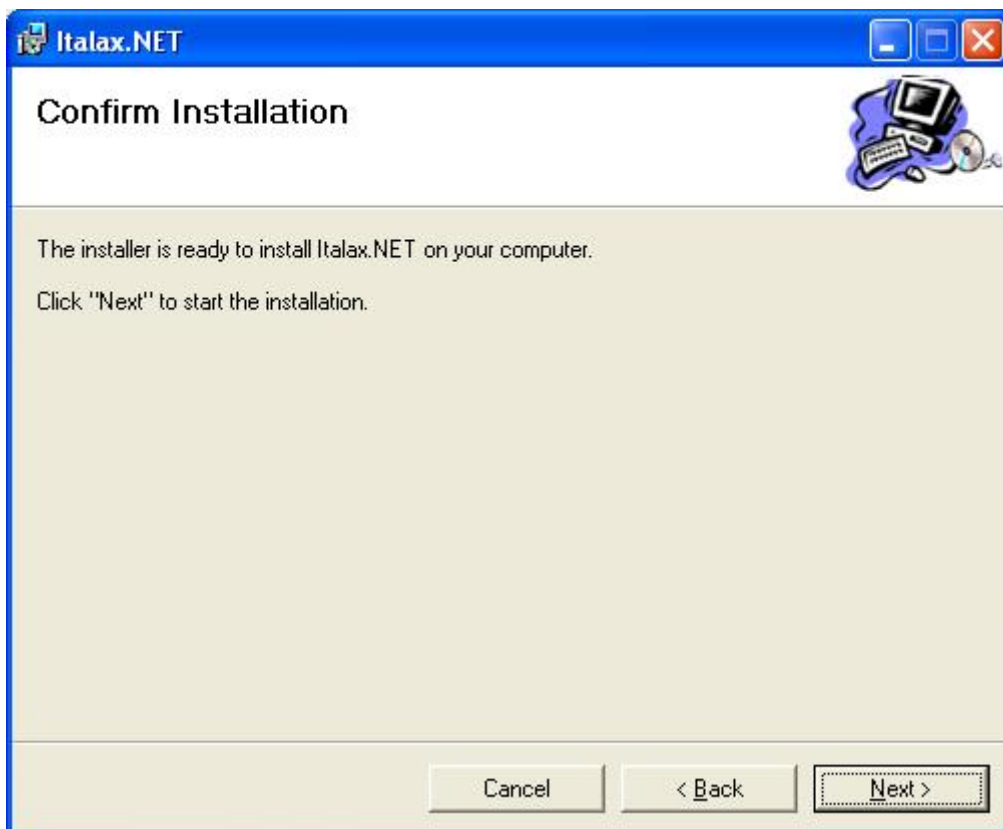
The install package will install necessary prerequisites as required. These prerequisites may take some time to install.



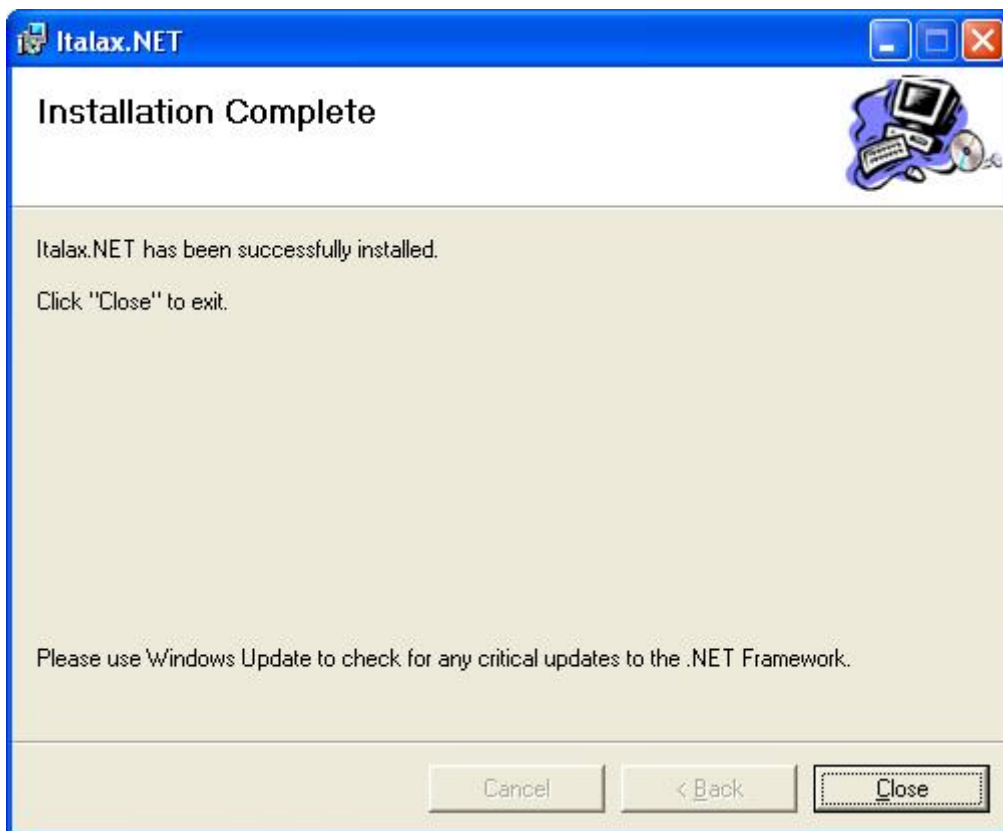
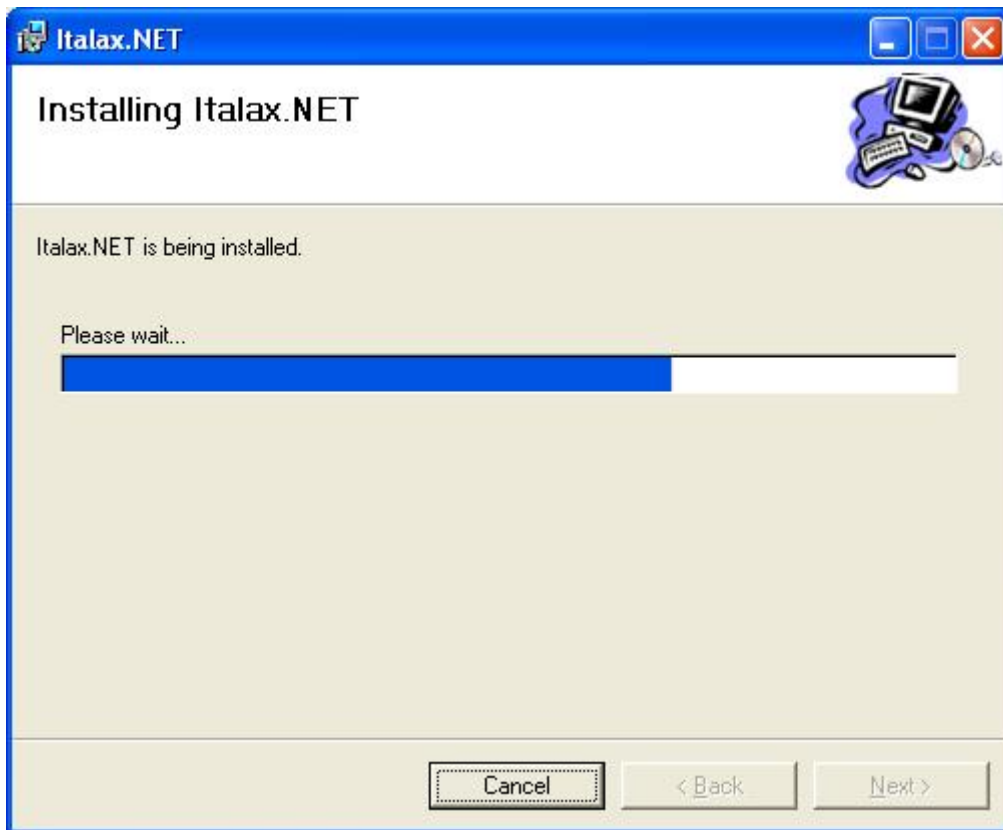
- 4) Click "**Next >>**"



5) If you wish, you can change the default install location for Italax.NET. Click "**Next >>**"



6) Click "**Next >>**"



6) Click **Close**

1.5 FOLLOW-UP ACTIONS

Italax.NET installs with a temporary 30 day licence. After this period you will need to install a licence from Italax.com to continue using Italax.NET

After installing the Italax.NET Client, it must be configured to point to the server installation of Italax.NET. For information on configuring an Italax.NET Client, please refer to:

[“How To – Configure Italax.NET Client”](#)

For information on how to register and receive an Italax.NET licence, please refer to:

[“How To - Register Italax.NET”](#)